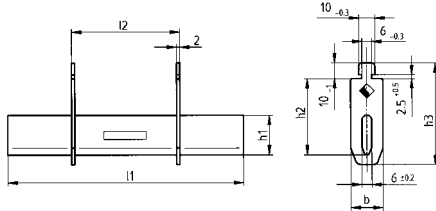


# NH-SICHERUNGSMATERIAL / MATÉRIEL DE COUPE-CIRCUIT HPC

## Trennmesser DIN 00, 1, 2, 3

## Couteaux DIN 00, 1, 2, 3



### Abmessungen/Dimensions

| Grösse<br>Grandeur | a<br>min. | b<br>min. | c<br>± 3 | d  | e |
|--------------------|-----------|-----------|----------|----|---|
| DIN 00             | 77        | 15        | 35       | 47 | 6 |
| DIN 1              | 132,5     | 20        | 40       | 66 | 6 |
| DIN 2              | 147,5     | 25        | 48       | 66 | 6 |
| DIN 3              | 147,5     | 32        | 60       | 66 | 6 |

### Verpackung pro Stück / Emballage par pièce

| Grösse<br>Grandeur | I <sub>max.</sub> | Bestell-Nr.<br>Référence | E-Nr.     | Verwendung<br>Application | MULTIVERT<br>MULTIBLOC |
|--------------------|-------------------|--------------------------|-----------|---------------------------|------------------------|
| DIN 00             | 160 A             | <b>1301.0600</b>         | 840700009 |                           |                        |
| DIN 1              | 250 A             | <b>1301.0602</b>         | 840701009 |                           |                        |
| DIN 2              | 400 A             | <b>1301.0603</b>         | 840702009 |                           |                        |
| DIN 3              | 630 A             | <b>1301.0604</b>         | 840703009 |                           |                        |
| 3/1000             | 1000 A            | <b>0016.0025</b>         |           |                           |                        |

## Trennmesser SEV G 2, G 4, G 6

## Couteaux ASE G 2, G 4, G 6



### Abmessungen/Dimensions

| Grösse<br>Grandeur | a<br>± 3 | b  | c | d | e |
|--------------------|----------|----|---|---|---|
| SEV/ASE G 2        | 132      | 25 | – | – | 5 |
| SEV/ASE G 4        | 160      | 35 | – | – | 6 |
| SEV/ASE G 6        | 185      | 42 | – | – | 8 |

### Verpackung pro Stück / Emballage par pièce

| Grösse<br>Grandeur | I <sub>max.</sub> | Bestell-Nr.<br>Référence | E-Nr.     |
|--------------------|-------------------|--------------------------|-----------|
| SEV/ASE G 2        | 250 A             | <b>1301.2901</b>         | 840710009 |
| SEV/ASE G 4        | 400 A             | <b>1301.2902</b>         | 840711009 |
| SEV/ASE G 6        | 600 A             | <b>1301.2903</b>         | 840712009 |